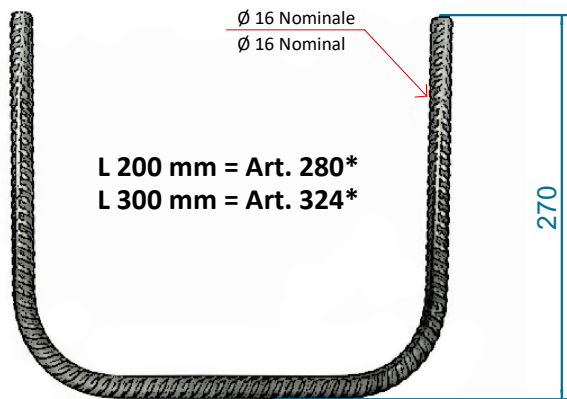




## VIA FERRATA

GRADINO NERVATO Ø 16 - acciaio inox AISI 304  
 RIBBED STEMPLER RUNG Ø 16 - Stainless steel AISI 304  
 ÉCHELON FILETÉ Ø 16 – inoxydable AISI 304  
 PASO ACANALADO Ø 16 - inox AISI 304

### COMPLY WITH EN 16869:2017 Design/construction of Via Ferratas



Leggere le istruzioni prima dell'uso  
 Read instructions before use  
 Lire les instructions avant utilisation  
 Leer las instrucciones antes de su uso

Dopo la resinatura, non toccare più l'ancoraggio piazzato e utilizzarlo non prima che siano trascorse 24 ore, meglio ancora se non almeno dopo 2/3 giorni (dipende dalla temperatura ambiente...). Rispettare comunque le indicazioni stabilite dalla fabbrica della resina utilizzata.

After the resin, do not touch the anchor and use it no earlier than 24 hours, even better if after 2/3 days (dependent on ambient temperature...). Please, comply with the directions set by the factory of the resin used.

Después de aver colocado el anclaje con la resina, no toque el anclaje y utilizarlo no antes de 24 horas, aún mejor si no menos después de 2/3 días (dependiendo de la temperatura ambiente...). Respetar las instrucciones de la resina utilizada, como escrito en las hoja tecnicas del producto.

Après la résine, ne touchez pas l'ancre et l'utiliser placé au plus tôt 24 heures, encore mieux si pas moins après 2/3 jours (en fonction de la température ambiante...). Toujours se conformer aux orientations fixées par l'usine de la résine utilisée.

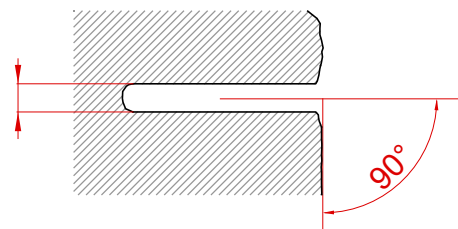
ART. 280 \* - ART. 324\*

INSTALLAZIONE CON RESINA  
 INSTALACIÓN CON RESINA

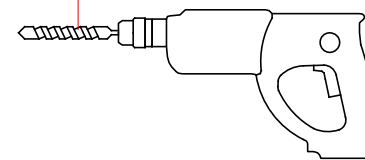
INSTALLATION WITH RESIN  
 INSTALLATION AVEC RÉSINE

1

20 mm



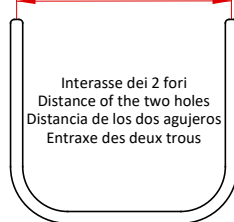
per gambo Ø 16, punta Ø 20  
 for stem Ø 16, tip Ø 20  
 por varilla Ø 16, punta Ø 20  
 pour tige Ø 16, pointe Ø 20



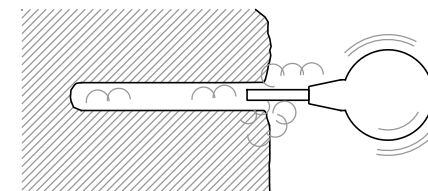
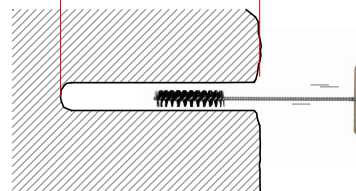
2

X = 200/300 mm

L = MIN 120 mm



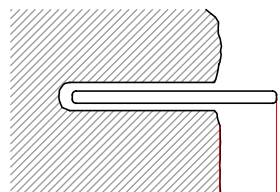
Interasse dei 2 fori  
 Distance of the two holes  
 Distancia de los dos agujeros  
 Entraxe des deux trous



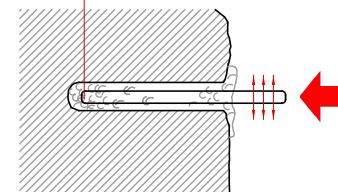
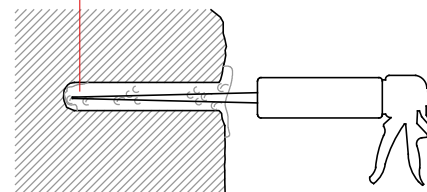
3

Resina bicomponente  
 Two components resin  
 Resina de dos componentes  
 Résine à deux composants

Inserire e scuotere leggermente  
 Insert and slightly shake  
 Insérer et serrer légèrement  
 Inserte y agitar ligeramente



**OK!**  
 Prova  
 Test  
 Prueba



MAX 150 mm

4

**OK!**

Piazzamento corretto : ORIZZONTALE!!!  
 Correct placement: HORIZONTAL!!!

Le placement correct: HORIZONTAL!!!  
 La correcta colocación: HORIZONTAL!!!

